

bossdesign

HAWAII / SEOUL

HOSPITALITY AND F&B INTERIOR DESIGN

COMPANY PROFILE

bossd_osign

Interior Design, Computer Graphics and Architecture

Design firm based in Hawaii and Seoul. The company specializes in Interior Design. Our philosophy and goal is to always ensure the highest standard of service for our clients, by providing professional and custom services for each project.





DESIGN METHODOLOGY

Due the global nature of our projects we work in multiple locations worldwide. Our design practice focuses on the development of the Design in 3D, from concept to construction documents. Our main focus relies on innovation and efficiency, by proposing new design strategies, and methodologies. We use the latest computer and 3D technologies in our design process, producing realistic 3D Computer Graphics to provide our clients with a very accurate idea of the design.

OUR GOALS

Our goal is to always ensure the highest standards by providing professional and custom services for each project.



SERVICE
ORIENTED



FLUENT
COMMUNICATION



3D
TECHNOLOGIES



CONSTANT
INNOVATION



PROJECTS & CLIENTS

ZARA

ZARA HOME

HYATT

FOXEY

ADEAM

BBVA

DIFFA

デラサーフ



SK-II

UPI

CBRE

Deloitte.

ADIENT

Amway

マルハチ

GAP

JTI

TATCHA

CHAMPAGNE
PERRIER-JOUET

Mucci's

The SAZABY LEAGUE

THE MARMARA

AGATHA
PARIS

ACCORHOTELS

Qatar Petroleum



ANA

Starbucks

YouTube

hp

b

G S I X
GINZA SIX

ISETAN

PARADISE

MEJURI





TEAM

Karen Kim BMC MBA IDAS Ph certificate

Ivan Pazos, AIA BA MS PhD

Justin Ichikawa, CPA

Matthew Kelly, BA ID

Ivan Pazos, BA AACA RIAA

Berta Alguero, ID

Gorka Blas, COAM MA

Junko Hirayama PM

Jennifer Cho, LEED IIDA

Giuseppe Mucci, F&B

Natalie Cheng, AIA



KAREN KIM

CEO

Project Manager Director and Designer graduated from the Fashion Institute of Technology (FIT) in New York, MBA by Korea University , CEO program certificate at Hongik University and Ph Doctor certificate of Architecture in Urban Planning and Design at Korea University.

She is the Founder and CEO of Bosdesign Korea and Hawaii, and has successfully designed and completed the construction of numerous interior design projects in Korea and in other international locations.

Also known for her media appearances.
She's currently based in Honolulu, Hawaii.



IVAN PAZOS

Design Director

Architect and Interior Designer. He has a Master in Architecture by Columbia University in New York, and a PhD in Computer Science by A Coruña University in Spain. He holds Architecture Professional Licenses in New York and in Spain. He has lectured in prestigious academic institutions and his work and research has been widely published.

He was Architecture Professor at Korea and Hanyang Universities in Seoul, and he gained Professional experience working with Peter Eisenman and Skidmore Owings and Merrill (SOM), both in New York, and Nihon Sekkei in Tokyo.

PROJECT MAP CITIES

GLOBAL DESIGN FIRM

BOSSDESIGN has completed projects in cities such as Tokyo, New York, Seoul, London, Hawaii, Osaka, Kyoto, Fukuoka, Yokohama, Nagoya, Shanghai, Beijing, Brussels, Santiago de Compostela, Madrid, Mexico DF, Hanoi, Doha and Dubai among other international locations.



DESIGN PUBLICATIONS

Interior Design Magazine
 Monacelli Press
 El Pais
 Elle Decor US
 Elle Decor Korea
 Pasajes
 Hospitality Design
 Elle Decor Japan
 Arquitectura Viva



[ELLE] モダンライフ..

時間だからこそリラックス&エトレス

・トタイムを満たしてくれるのは、モードな
 3着心地のよさを同時に叶えてくれるルーム
 イビングやイニシャル刺しゅうなどのディ
 3センスが宿る。上質な素材感なのに 自宅で
 するのうれしい。

リラックスに新ショップがオープン!

4月20日(木) 銀座に誕生する注目のショッ
 アドレス、ギンザックスに「アディラム」の
 7がオープン。ブランド5周年を記念したルー
 コレクションをはじめ、春夏コレクションや
 1ーなどフルラインが揃う新しいフロアに足を

URBAN RESORT KIRANAH GARDEN TOKYO BAY

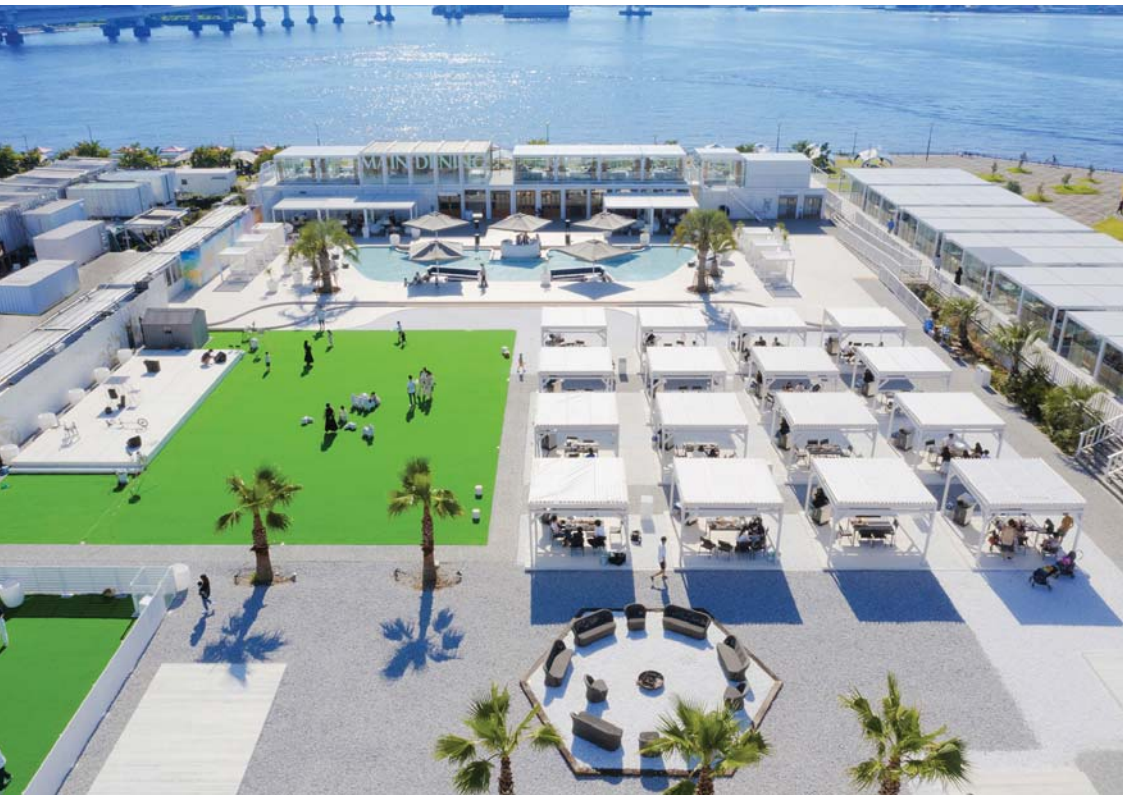
Toyosu, Tokyo, Japan 2022. By BOSSDESIGN

Urban Resort in the heart of Tokyo Bay overlooking the megapolis skyline. Ibiza inspired trendy and exclusive venue, featuring both an indoor area, including a poolside deck.



























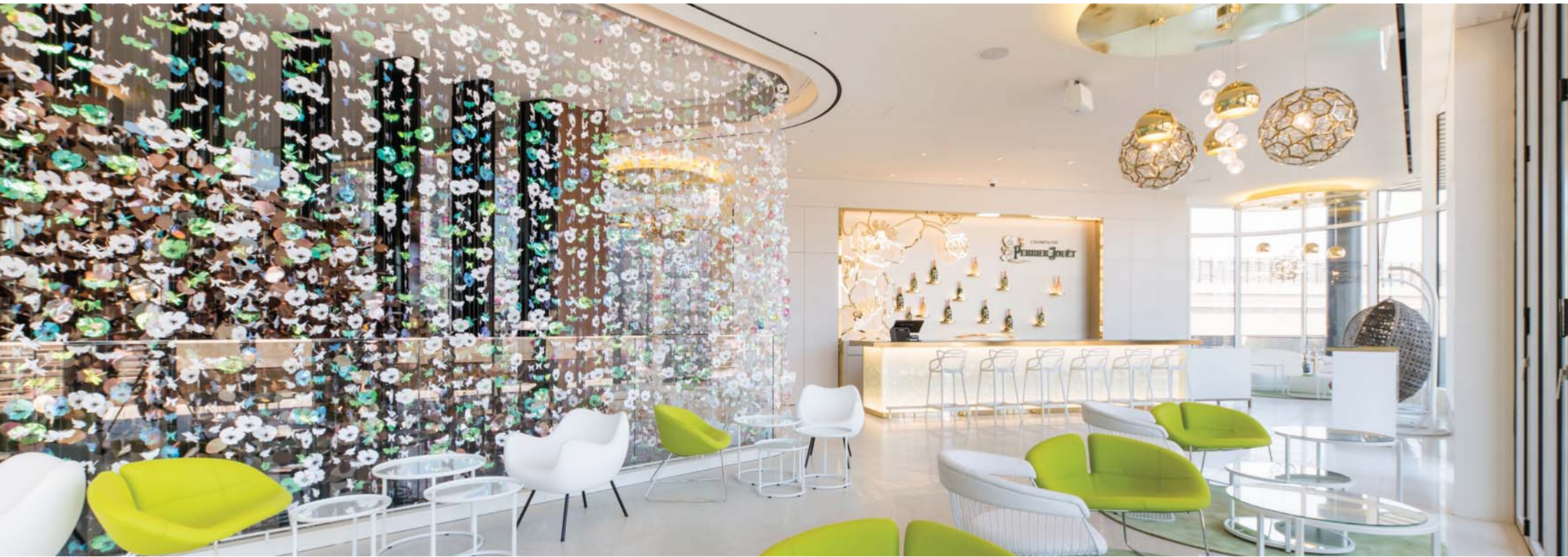


PERRIER JOUET SEOUL

**Paradise City Casino and Hotel, Seoul, Korea 2015.
By BOSSDESIGN**

Trendy venue at Incheon's Airport Paradise City Casino. High end Bar for top world class Champagne brand Perrier-Jouet, catering a feminine and sophisticated clientele. The design is a mixture of greens and golds.





#PERRIER-JOUËT
시크릿가든











CHAMPAGNE
PERRIER-JOUËT

CHAMPAGNE
PERRIER-JOUËT

LEE BO YOUNG & JISUNG APT SEOUL

Gangnam, Seoul, Korea 2013. By Bosssdesign

Apartment design for Korean celebrity actors Lee Bo Young and Jisung in Gangnam, Seoul. The design is a modern and clean luminous space. The result is a very contrasted minimalist interior.







BABY V.O.X. APT SEOUL

Seoul, Korea 2014. By Bosdesign

New family residence of Kim I-Jin former leader of Korean Pop band Baby-V.O.X. in Seoul. Modern warm and simple design.

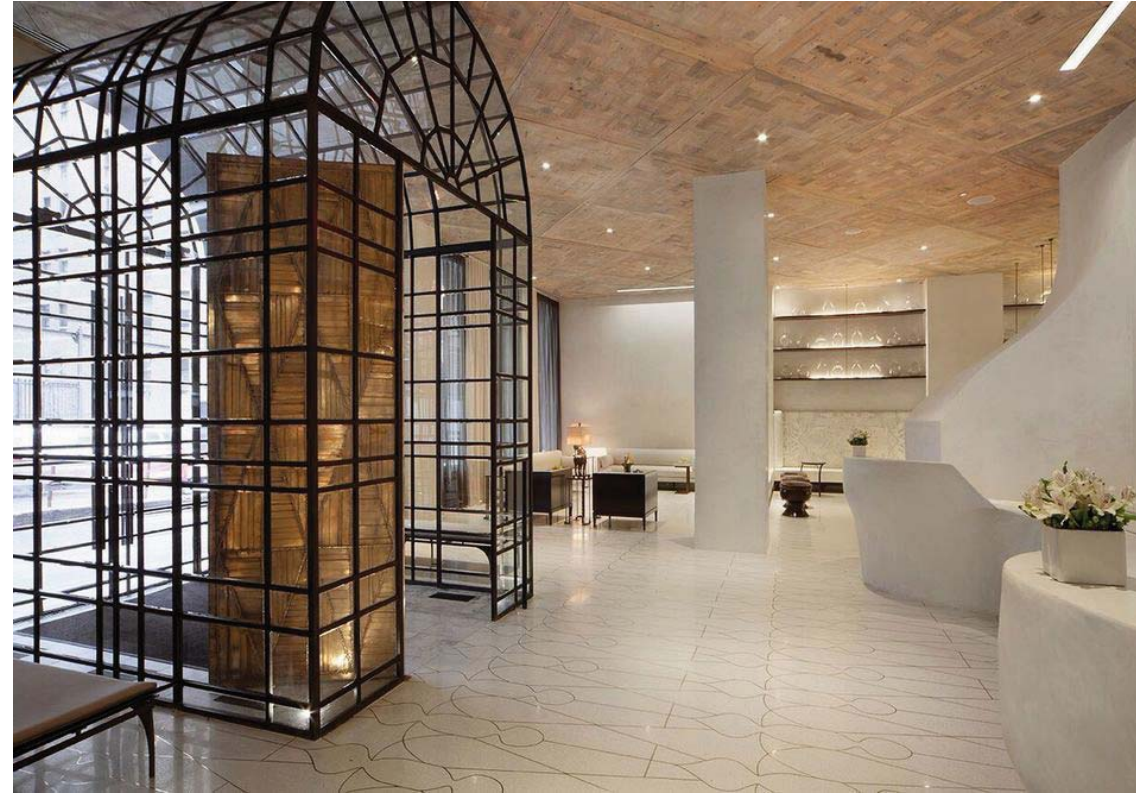


MARMARA PARK AVENUE HOTEL NEW YORK CITY

Manhattan, NYC, USA 2013

BOSSDESIGN collaboration with Joe Gingsberg

The Marmara Hotels property in Park Avenue South, just a few blocks from Grand Central Station. The Hotel targets a sophisticated crowd of Global Nomads. The design is a Collaboration between New York artist Joe Gingsberg and Bossdesign Art pieces, finishes and applications create an unique space, with its own character and personality.







upscale/luxury guestrooms or suites **awards** finalist

marmara park avenue

New York
Photography courtesy of the MARMARA PARK AVENUE and JOE GINSBERG



1. Custom artwork and wallpaper inspired by Raphael's 'The School of Athens' address a guestroom's theme.

2-3. An urban aesthetic meets with a nature-inspired office in three bedrooms. Better performance's design and best bedroom and best bathroom.

4. The living area in the Marmara Park Avenue lobby is a mix of contemporary, traditional, classic, and contemporary styles, with a focus on the lobby bar area.




Owner and Management Company
The Marmara Group
Architectural Firm: **Kevin Byrne Architects, New York**
Architectural Firm: **Kevin Byrne and Carolina Espinal**
Interior Design and Furnishing Firm: **Joe Ginsberg, New York**
Interior Design Firm: **Joe Ginsberg, Laura Saltmann, Tabriz Soudki, Ivan Pardo, Will Daniels, Alexandra Romero,**

Nathalie Ruiz, Anne-Laure Ighavie, Neil Byrne, Yasmine Ghazi, Kathryn McQueen, Mia van Alphen, Jeff Santiago, Igor Silberman, Neelie Brinkman, Be Altkman, Pam Weaver, Lilla Givarian, Sam Bedman, John Costa, Frank Savastano, Aaron Franklin, Tom Leahy, Joel Stager, Jean Bergoin, Francis Bergoin, and Florin Comanescu

hospitalitydesign.com June 2016 173

upscale/luxury hotel

marmara park avenue

New York
Photography courtesy of the MARMARA PARK AVENUE and JOE GINSBERG







1. A hand-forged steel and glass chandelier and a hand-forged steel chandelier are the focal points of the lobby bar area.

2. A lobby seating area features a custom-designed seating arrangement with a focus on the lobby bar area.

3. Access from the lobby bar area is a striking feature, with a focus on the lobby bar area.

4. Customized artwork complemented a modern aesthetic in a modern lobby bar area.

5. A view of the lobby, with its seating and reception desks, and a focus on the lobby bar area.

Owner and Management Company
The Marmara Group
Architectural Firm: **Kevin Byrne Architects, New York**
Architectural Firm: **Kevin Byrne**
Interior Design Firm and Furnishing: **Joe Ginsberg, New York**
Interior Design Firm: **Joe Ginsberg, Laura Saltmann, Tabriz Soudki, Ivan Pardo, Will Daniels, Alexandra Romero, Yasmine Ghazi, Kathryn McQueen, Mia van Alphen, Jeff Santiago, Igor Silberman, Neelie Brinkman, Be Altkman, Pam Weaver, Lilla Givarian, Sam Bedman, John Costa, Frank Savastano, Aaron Franklin, Tom Leahy, Joel Stager, Jean Bergoin, Francis Bergoin, and Florin Comanescu**

TILA Construction Managers
Lighting: **Malerie Freundlich Lighting Design**
LSEBY: **Veronica, Dan, Fleming, Frederick, Wally, Lighting, Ben, Cloutier and Shellen, Benavente, Marlene, Boudreau, Peter, Talbot, Coffee, Table, Benavente, Benavente, Cloutier, Cloutier, Peter, and Cloutier, Cloutier**
Custom design and fabrication: **by Joe Ginsberg**
Bar and Glass Top Tables: **Tempo Luxury Home**
Art: **Joe Ginsberg**

Custom design and fabrication by Joe Ginsberg in collaboration with Surya
Blowfield of Water
Sofas: **Camp D'Etat**

GUESTROOMS
Headboard of Frame: **Architectural Systems, Inc.**
Carpet: **Custom design and fabrication by Joe Ginsberg in collaboration with Casavova Carpet**
Bedroom and Bathroom: **Custom design and fabrication by Joe Ginsberg**
Jewelry: **Joe Ginsberg and Turkish artists**
Handed Glass Lighting: **Custom by Tempo Luxury Home**
Best and Selected Lighting: **Custom design and fabrication by Joe Ginsberg in collaboration with Studio V, Hoffmann and Best, Best to Work, and Hoffmann**
Stainless Steel: **Studio Nord**
Tempo Luxury Home Lighting: **Tempo Luxury Home**
Karlens, Dan Schaefer, and Robert Abbey
Artworks and Studio A: **Artworks, Tullio, and Winston Tullio**
Angela Brown
Hoffmann

hospitalitydesign.com June 2016 1

awards winner





1. A hand-forged steel and glass chandelier and a hand-forged steel chandelier are the focal points of the lobby bar area.

2. A lobby seating area features a custom-designed seating arrangement with a focus on the lobby bar area.

3. Access from the lobby bar area is a striking feature, with a focus on the lobby bar area.

4. Customized artwork complemented a modern aesthetic in a modern lobby bar area.

5. A view of the lobby, with its seating and reception desks, and a focus on the lobby bar area.

Owner and Management Company
The Marmara Group
Architectural Firm: **Kevin Byrne Architects, New York**
Architectural Firm: **Kevin Byrne**
Interior Design Firm and Furnishing: **Joe Ginsberg, New York**
Interior Design Firm: **Joe Ginsberg, Laura Saltmann, Tabriz Soudki, Ivan Pardo, Will Daniels, Alexandra Romero, Yasmine Ghazi, Kathryn McQueen, Mia van Alphen, Jeff Santiago, Igor Silberman, Neelie Brinkman, Be Altkman, Pam Weaver, Lilla Givarian, Sam Bedman, John Costa, Frank Savastano, Aaron Franklin, Tom Leahy, Joel Stager, Jean Bergoin, Francis Bergoin, and Florin Comanescu**

TILA Construction Managers
Lighting: **Malerie Freundlich Lighting Design**
LSEBY: **Veronica, Dan, Fleming, Frederick, Wally, Lighting, Ben, Cloutier and Shellen, Benavente, Marlene, Boudreau, Peter, Talbot, Coffee, Table, Benavente, Benavente, Cloutier, Cloutier, Peter, and Cloutier, Cloutier**
Custom design and fabrication: **by Joe Ginsberg**
Bar and Glass Top Tables: **Tempo Luxury Home**
Art: **Joe Ginsberg**

Custom design and fabrication by Joe Ginsberg in collaboration with Surya
Blowfield of Water
Sofas: **Camp D'Etat**

GUESTROOMS
Headboard of Frame: **Architectural Systems, Inc.**
Carpet: **Custom design and fabrication by Joe Ginsberg in collaboration with Casavova Carpet**
Bedroom and Bathroom: **Custom design and fabrication by Joe Ginsberg**
Jewelry: **Joe Ginsberg and Turkish artists**
Handed Glass Lighting: **Custom by Tempo Luxury Home**
Best and Selected Lighting: **Custom design and fabrication by Joe Ginsberg in collaboration with Studio V, Hoffmann and Best, Best to Work, and Hoffmann**
Stainless Steel: **Studio Nord**
Tempo Luxury Home Lighting: **Tempo Luxury Home**
Karlens, Dan Schaefer, and Robert Abbey
Artworks and Studio A: **Artworks, Tullio, and Winston Tullio**
Angela Brown
Hoffmann

hospitalitydesign.com June 2016 1











W HOTEL ORANGE COUNTY

Orange County, CA, USA 2008
Bosdesign collaboration with SOM

Huntington beach is a surfing spot in the LA Area. The project was designed by SOM, and Bosdesign collaborated in the interior design. Purples, reds, and oranges are mixed together with wave like wood structures. A safe Heaven for the dangerously trendy.







MANHATTAN LOFTS LONDON

London, UK 2018
Bossdesign collaboration with SOM

New trendy Hotel and residences in London. The design was made by SOM, and Bossdesign was lead designer for the Lobbies and terraces.









PARK HOTEL HYDERABAD

Hyderabad, India 2010
BOSSDESIGN collaboration with SOM

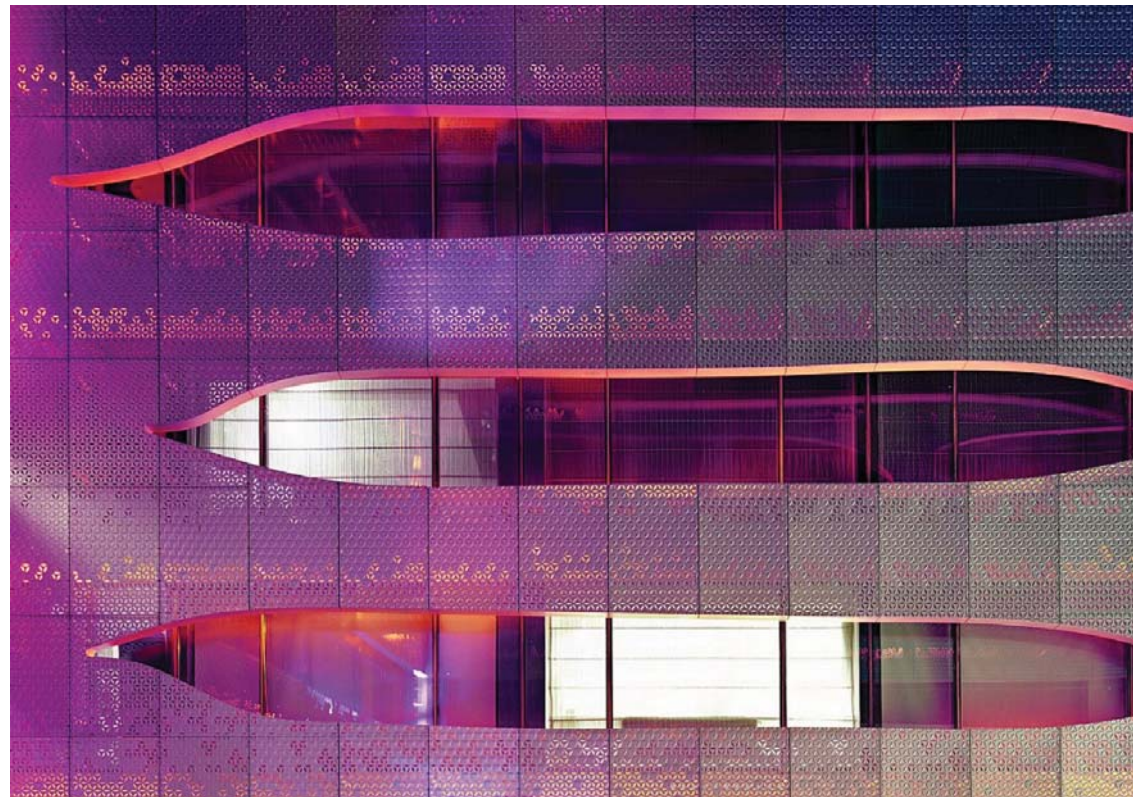
Hyderabad, India, is well-known for its pearls and bangle bracelets, as well as for its Nizams. The city's long jewelry tradition is the inspiration for the décor of the new Park Hyderabad, a hotel boutique that opened in April of 2010. The result is an elegant mix of traditional Indian heritage, with an overall modern look to it. Cutting edge design meets local traditions.











MUCCI'S LONDON

Kings Road, London, UK 2020. By BOSSDESIGN

Exclusive Italian dining in the heart of London, by Giuseppe Mucci. The restaurant gathers a high end and exclusive crowd. Great reviews, and always packed!









PASTACCIO SEOUL

Ilsan, Korea, 2013. By BOSSDESIGN

Italian fine eatery in Ilsan, Seoul. The venue has sophisticated interiors with predomination of greens and wood. Promoted by successful businessman Sewon Baek, a run by an Italian manager Giuseppe Mucci. The restaurant distinguishes itself from others Italian venues, as a truly European establishment.







SCORES CLUB NEW JERSEY

Atlantic City, NJ, USA 2012.
BOSSDESIGN collaboration with ICrave

Collaboration with ICrave one of the world top designers for nightlife spots for the Blue Velvet Club, and Scores Club in Atlantic City, New Jersey. Blue and gold tones define the lavish venue.









NAM KWAN CHEONGSONG

Cheong Song, Korea 2016. By BOSSDESIGN

Renovation of a former high school building into a museum for renowned Korean painter from CheonSong Nam Kwan.







KCC GOLF VILAS PHILIPPINES

Clark, Philippines 2018. By BOSSDESIGN

Luxury Vilas, annex to a golf course in the mountain resort town of Clark in the Philippines, on a Korean owned golf course. The vilas are simple and elegant with adjacent swimming pools.







INTEGRATED RESORT MASTERPLAN

Yokohama, Japan 2018

BOSSDESIGN collaboration with Nihon Sekkei

BOSSDESIGN designed and did the 3D work for the re-development of the Yokohama port. The project includes an opera house, hotels, convention center, recreational, residential and a casino.













ITOSHIMA RESORT FUKUOKA

Itoshima, Fukuoka, Japan 2023. By BOSSDESIGN

Resort Dining in Fukuoka's West Coast by Digisurf. The project sits on a cliff overlooking the ocean over a small cozy beach. Ideal for food, drinks and private salt water spa. A perfect venue to relax and dine after a day on the seashore.









HAWAII / SEOUL
INTERIOR DESIGN

bossdesign

